

To too or two ?

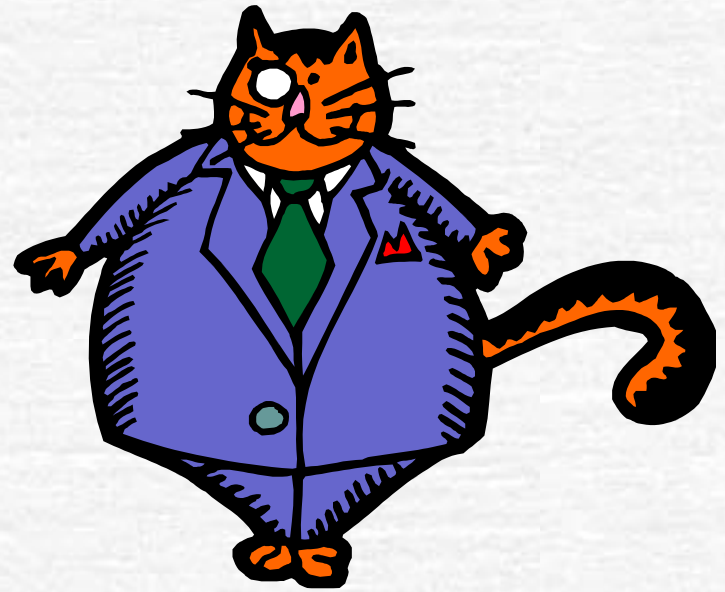
☛ To

☛ I am going to the shops.



Too (meaning number 1)

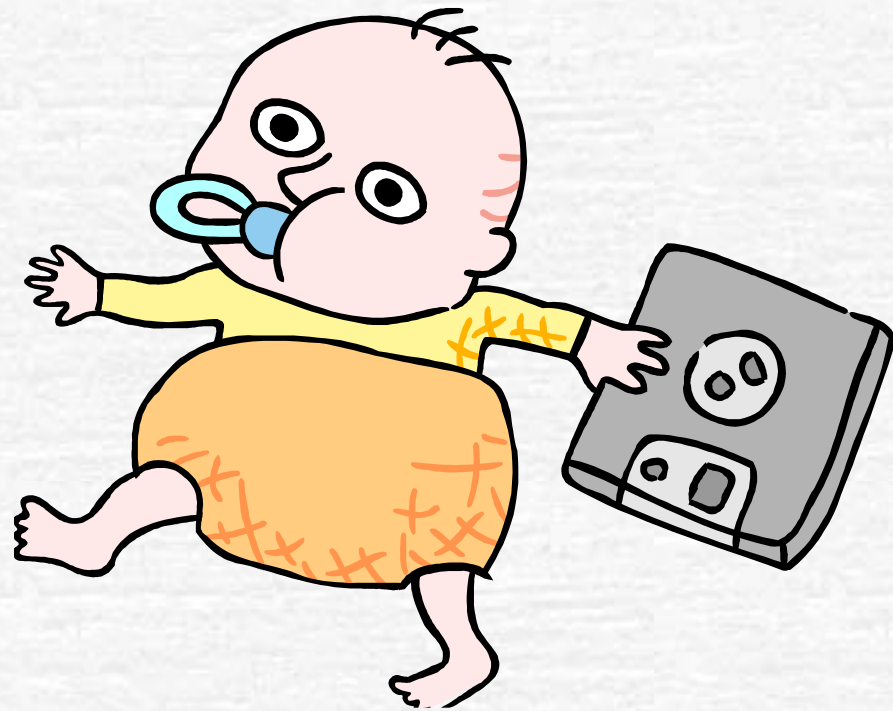
- Too
- The cat ate **too** much.



Too (meaning number 2)

☛ Too

☛ Can I come too?



Two

Two

There were two fish.



Complete the sentence.

- ☛ There were _____ many flies.
- ☛ Let's go _____ the swimming baths.
- ☛ I ate _____ bars of chocolate.
- ☛ Tom walks _____ school.
- ☛ I want some trifle _____ please.

