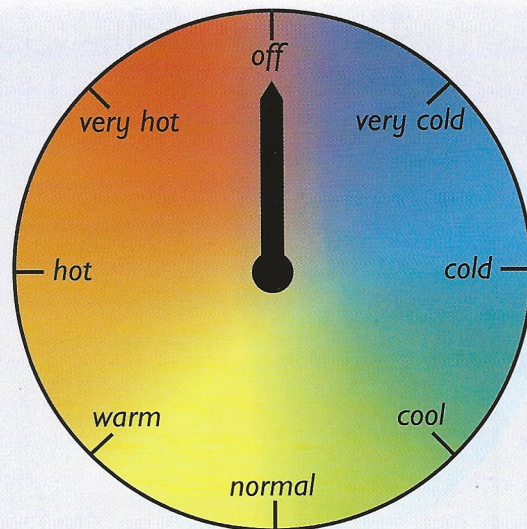


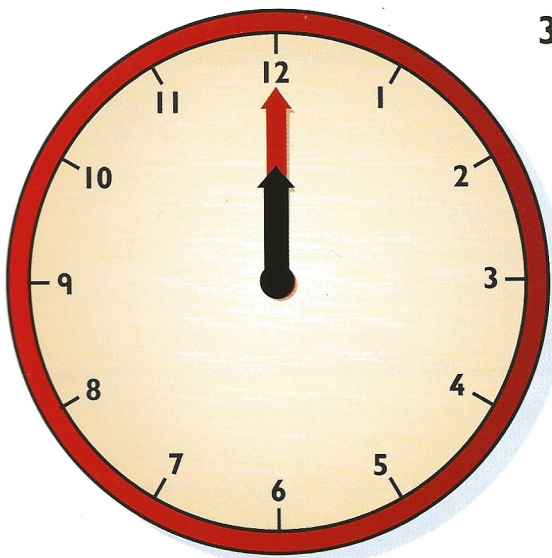
1 Through how many degrees does the pointer turn when it moves

- (a) clockwise from *off* to *cold*
- (b) anti-clockwise from *hot* to *warm*
- (c) clockwise from *very hot* to *cool*
- (d) clockwise from *cold* to *warm*
- (e) anti-clockwise from *very cold* to *very hot*
- (f) clockwise from *warm* to *cool*?



2 Which setting is the pointer facing after it turns

- (a) 45° clockwise from *normal*
- (b) 135° anti-clockwise from *off*
- (c) 360° anti-clockwise from *hot*
- (d) 270° clockwise from *cold*?



3 Through how many degrees **clockwise** does the **hour** hand turn when it moves from

- (a) 12 o'clock to 3 o'clock
- (b) 4 o'clock to 5 o'clock
- (c) 8 o'clock to 10 o'clock
- (d) 7 o'clock to 1 o'clock
- (e) 6 o'clock to 3 o'clock
- (f) 5 o'clock to 9 o'clock
- (g) 9 o'clock to 2 o'clock
- (h) 1 o'clock to 11 o'clock?

4 What time does the clock show when the hour hand moves clockwise

- (a) 60° from 5 o'clock
- (b) 180° from 10 o'clock
- (c) 270° from 12 o'clock
- (d) 330° from 11 o'clock?

