

**Do not turn over or open this booklet until told to do so**

# CEA

## Common Entrance Assessment

### Paper 1

**Saturday 14 November 2009**

**Time: 1 Hour**

**Please fill in the following from your admission card:**

Your Candidate Number ANSWERS

Your Assessment Centre \_\_\_\_\_

Your Date of Birth \_\_\_\_\_

**Answer all 58 questions in this booklet**

NOT TO BE FILLED IN BY THE PUPIL			
MATHEMATICS			
Page	Marks	Score	Check
1	(4)		
2	(3)		
3	(1)		
7	(2)		
8	(2)		
9	(2)		
10	(2)		
13	(3)		
14	(5)		
18	(3)		
19	(2)		
20	(3)		
<b>TOTAL 32</b>			

NOT TO BE FILLED IN BY THE PUPIL			
ENGLISH			
Page	Marks	Score	Check
4	(3)		
5	(5)		
6	(3)		
11	(1)		
12	(4)		
15	(1)		
16	(6)		
17	(1)		
21	(2)		
22	(6)		
<b>TOTAL 32</b>			
<b>TOTAL SCORE</b>			

1. The **10 numbers** below show the number of electronic gadgets in the homes of 10 primary school pupils.

5 2 8 3 8 3 5 7 7 2

$$50 \div 10 = 5$$

What is the **mean** (average) number of gadgets?  
Write your answer in the space below.

5 gadgets

2. Look again at the 10 numbers.

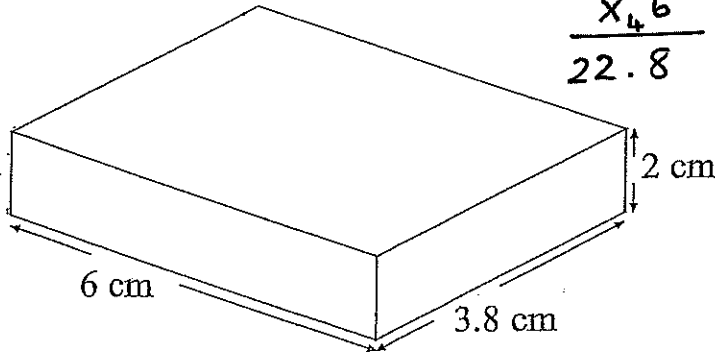
What is the **range**?

Write your answer in the space below.

$$8 - 2 = 6$$

6 gadgets.

3. The **cuboid** below is 6 cm by 3.8 cm by 2 cm.



$$\begin{array}{r} 3.8 \\ \times 6 \\ \hline 22.8 \end{array} \quad \begin{array}{r} 22.8 \\ \times 2 \\ \hline 45.6 \end{array}$$

What is the **volume** of this cuboid? Write your answer in the space below.

45.6 cm<sup>3</sup>

- 4.(a) What is **7:52 am** as a **24 hour clock time**? Write your answer in the space below.

07:52

- (b) What is **7:52 pm** as a **24 hour clock time**? Write your answer in the space below.

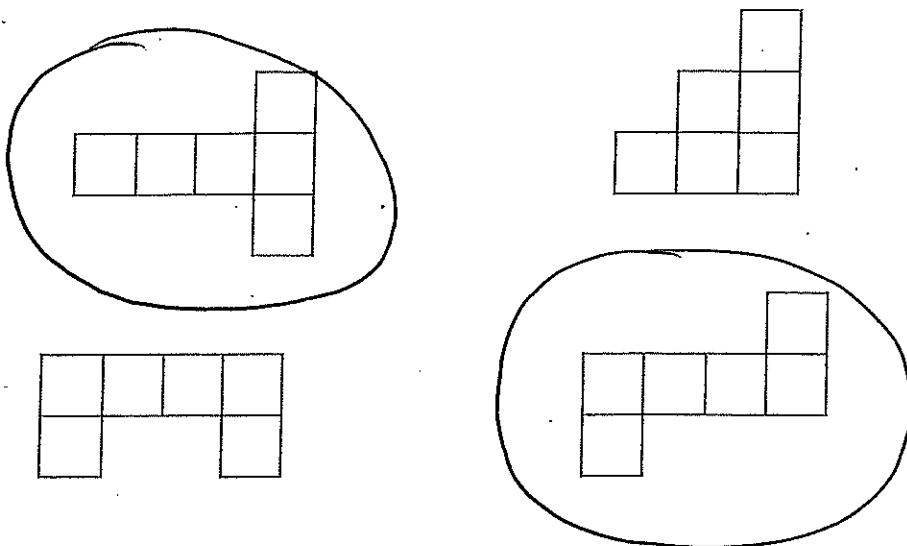
19:52

Do not write in this column	
(1)	
(1)	
(1)	
(1)	
(4)	

5. Complete the table below by putting a fraction or a percentage in each of the four empty boxes.

Percentage	$33\frac{1}{3}\%$	50%	75%	25%	20%
Fraction	$\frac{1}{3}$	$\frac{1}{2}$	$\frac{3}{4}$	$\frac{1}{4}$	$\frac{1}{5}$

6. A net of a cube can be folded to make a cube. Look at the four figures below. Circle the two figures that are nets of a cube.



7. Look at the two calculations below. Complete each calculation by finding the missing number. Write your answers in the spaces below.

$$1642 - 647 = \underline{995}$$

$$1487 + \underline{155} = 1642$$

$$\begin{array}{r} 15\ 13 \\ 1642 \\ - 647 \\ \hline 995 \end{array}$$

$$\begin{array}{r} 5\ 13 \\ 1642 \\ - 1487 \\ \hline 155 \end{array}$$

Do not write in this column

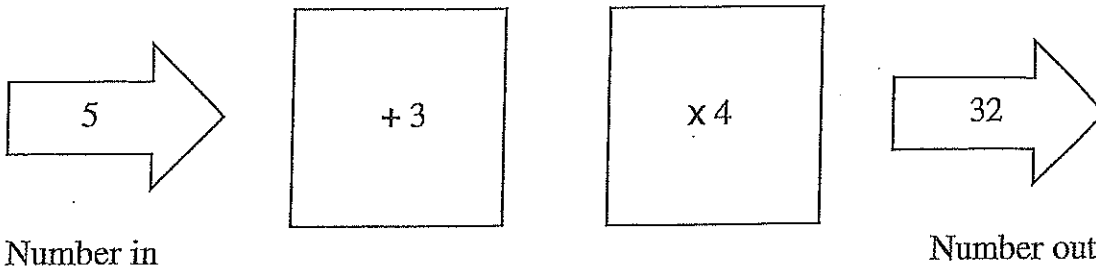
(1)

(1)

(1)

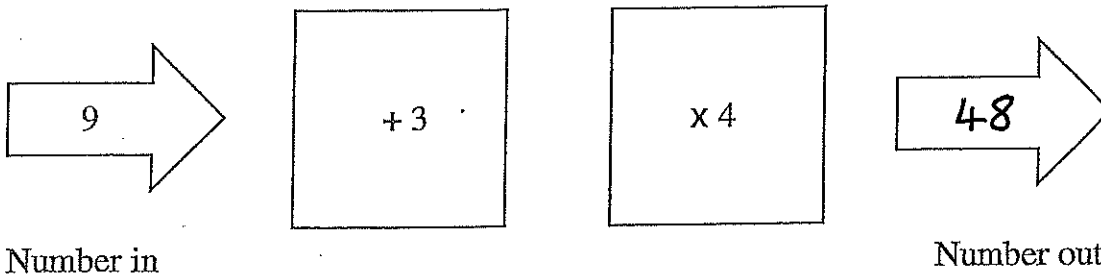
(3)

8. Look at the function machine below.

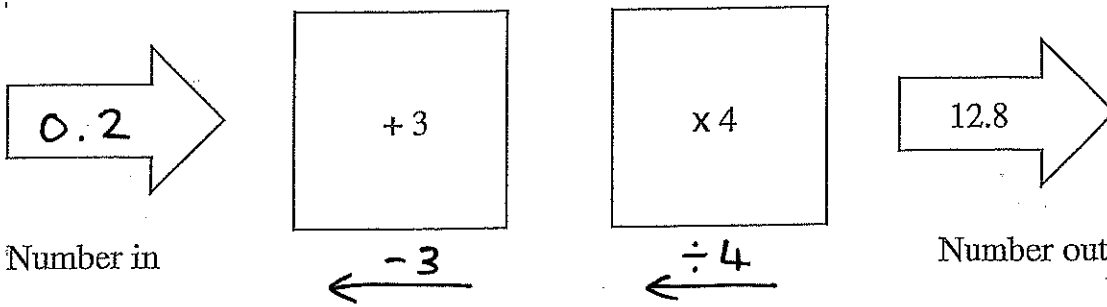


Complete the two function machines below by writing the correct number in the blank arrow.

(a)



(b)



$$4 \overline{) 12.8} \begin{array}{r} 03.2 \\ \underline{4} \phantom{.0} \\ 0 \phantom{.0} \end{array}$$

$$\begin{array}{r} 3.2 \\ -3.0 \\ \hline 0.2 \end{array}$$

Do not write in this column

(1)

(1)

**Homework! Oh, Homework!**

Homework! Oh, homework!  
I hate you! You stink!  
I wish I could wash you  
away in the sink,  
if only a bomb  
would explode you to bits.  
Homework! Oh, homework!  
You're giving me fits.

I'd rather take baths  
with a man-eating shark,  
or wrestle a lion  
alone in the dark,  
eat spinach and liver,  
pet ten porcupines,  
than tackle the homework  
my teacher assigns.

Homework! Oh, homework!  
You're last on my list,  
I simply can't see  
why you even exist,  
if you just disappeared  
it would tickle me pink.  
Homework! Oh, homework!  
I hate you! You stink!

Jack Prelutsky

⑨ 3 correct = 2 marks  
2 correct = 1 mark

Do not write in this column	
(2)	
(1)	
(3)	

9. Three animals are mentioned in the poem. Write their names in the spaces below.

shark      lion      porcupines

10. Which of these words best describes the poem? Tick  the best answer.

serious

humorous

depressing

exciting

11. The four words **teacher**, **reminds**, **carefully** and **difficult** are used in the sentence below.

**My teacher always reminds us to think carefully before answering difficult homework questions.**

Tick  the correct box in the table below to show which of the four words is used as a **verb**, a **noun**, an **adjective** or an **adverb** in the sentence.

	verb	noun	adjective	adverb
teacher		✓		
reminds	✓			
carefully				✓
difficult			✓	

\* All correct = 2 marks  
3/4 = 1 mark

12. Write the **past tense** of the following words in the spaces below. Be careful with your spelling. The first has been done for you.

assign                      assigned

wash                        washed

explode                    exploded

give                         gave

stink                        stank

\* All correct = 2 marks (2)  
3/4 = 1 mark

13. Look at the **last verse** of the poem. Find the **phrase of four or five words** that is closest in meaning to the words: **I would be delighted**.

Write the phrase in the space below.

it would tickle me pink

Do not write in this column

(2)

(2)

(1)

(5)

14. The last line of the second verse of the poem uses the word **assigns**. Look at the four statements below. Tick  the box opposite the correct statement. Only **one** of the statements is correct.

When my teacher **assigns** a homework, it means that:

she writes her name at the end of the homework

she keeps a record of each pupil's homework mark

she asks each pupil to mark their partner's homework

she tells the pupils what they must do for homework

15. Find the **word** in the poem closest in meaning to each of the following. Write your answer in the space below.

having a nasty smell stink

blow up explode

vanished from sight disappeared

\* All correct = 2  
2/3 = 1

Do not write in this column

(1)

(2)

(3)

16. (a) The temperature in Belfast is  $3^{\circ}\text{C}$ .  
The temperature in Glasgow is  $8^{\circ}\text{C}$  lower than in Belfast.

What is the temperature in Glasgow?  
Write your answer in the space below.

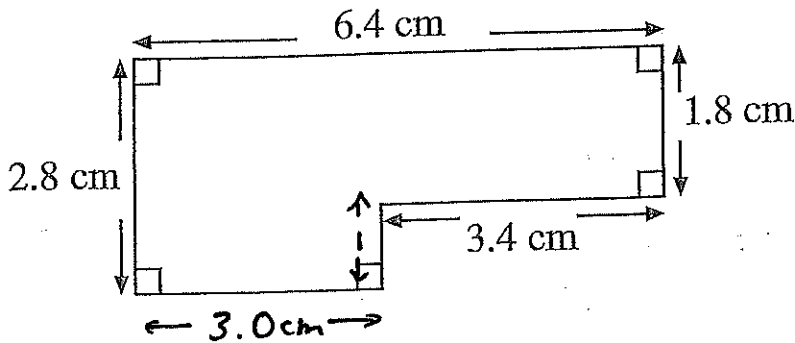
    - 5      $^{\circ}\text{C}$

- (b) The temperature in Edinburgh is  $-4^{\circ}\text{C}$ .  
The temperature in Dresden is  $7^{\circ}\text{C}$  lower.

What is the temperature in Dresden?  
Write your answer in the space below.

    - 11      $^{\circ}\text{C}$

17. Look at the shape below.



Find the perimeter of the shape. Write your answer in the space below.

    18.4     cm

$$\begin{array}{r} 6.4 \\ 1.8 \\ 3.4 \\ 1.0 \\ 3.0 \\ 2.8 \\ \hline 18.4 \end{array}$$

Do not write  
in this column

(1)

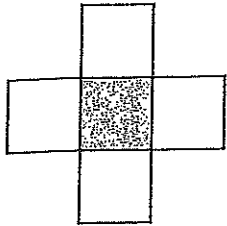
(1)

(2)

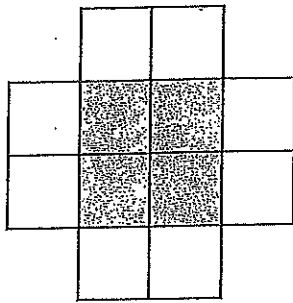


18. Look at the sequence of three patterns below. Each pattern is made up of shaded and unshaded squares. For example, **pattern 2** has **4 shaded** squares and **8 unshaded** squares.

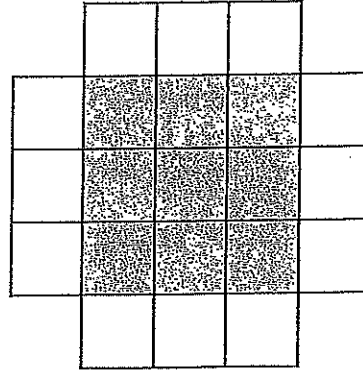
Pattern 1



Pattern 2



Pattern 3



Look at the table below for the number of **unshaded** squares in each pattern.

Pattern	1	2	3	7
Unshaded squares	4	8	12	28

*Handwritten notes: arrows from 1 to 4, 2 to 8, 3 to 12, and 7 to 28, each labeled 'x4'.*

How many **unshaded** squares are there in **pattern 7**? Write your answer in the space below.

28 unshaded squares

19. Look at the table below for the number of **shaded** squares in each pattern.

Pattern	1	2	3
Shaded squares	1	4	9

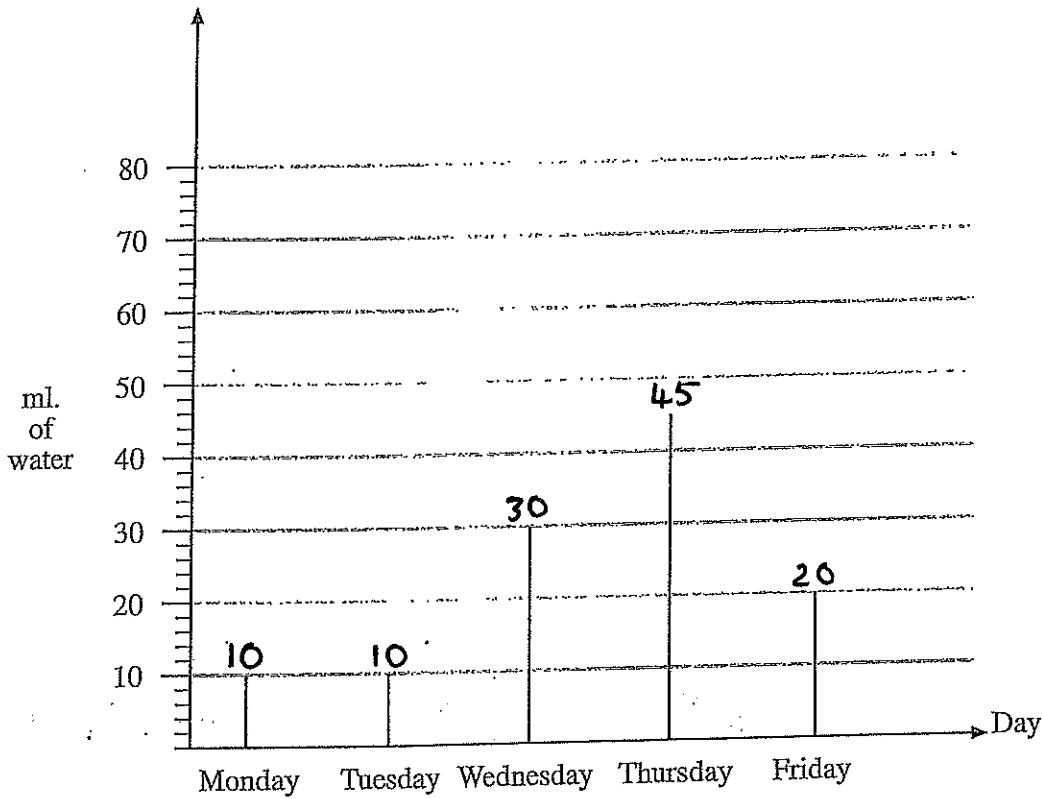
*Handwritten notes: 1^2 = 1, 2^2 = 4, 3^2 = 9*

How many **shaded** squares are there in **pattern 8**? Write your answer in the space below.

64 shaded squares

Do not write in this column

20. Nora's pet hamster is ill. The vet tells Nora to give the hamster water each day. Nora must keep a record of the amount of water the hamster drinks each day. Nora draws the graph below. The graph shows how many millilitres of water the hamster drinks over 5 days.



- (a) The hamster had more water to drink on Friday than on Monday. **How much more?** Write your answer in the space below.

10 ml       $20 - 10 = 10$

- (b) On what **day** did the hamster drink the **greatest** amount of water? Write your answer in the space below.

Thursday

21. Over two **consecutive** days there is a **50% increase** in the amount of water the hamster drinks. Write the two days in the spaces below.

Wed and Thurs       $50\% \text{ of } 30 = 15$   
 $30 + 15 = 45$

Do not write in this column.

(1)	(1)
(1)	(1)
(2)	(2)

22. Write a number in the box below that makes the statement true.

15 is 25 % of 60

$$\frac{15}{60} = \frac{1}{4} = 25\%$$

23. An ice skater spins on the ice. She turns  $3\frac{1}{2}$  times before stopping.  
 How many degrees has she turned?  
 Write your answer in the space below.

1260 °

$$\begin{array}{r} 360 \\ \times 3 \\ \hline 1080 \\ + 180 \\ \hline 1260 \end{array}$$

Do not write  
in this column

(1)

(1)

(2)

The passage you are about to read contains five errors. Read the passage and then answer the questions that follow it.

**A missed bin collection**

Dear Sir,

I am a schoolboy and this is the first letter I've ever written. (line 1)  
 I am writing to ask you to collect our bin on the day you say (line 2)  
 you will. Last week our bin wasn't collected. This made (line 3)  
 my mum furious and she is more strict on days when shes *she's* (line 4)  
 furious. (line 5)

A foul smell is coming from our bin. My mum tells me that (line 6)  
 bins can be a health hasard and that I shouldn't play near (line 7)  
 smelly bins. She says that if bins are pushed over they (line 8)  
 can attract rats. Can you see my problem. I want to play ? (line 9)  
 in our alley, but I don't want to disobey my mum. (line 10)

I'm writing this letter because my mum's too polite to complain. (line 11)  
 But my uncle Peter says, "You don't get if you don't ask" and (line 12)  
 so I'm asking you to send someone to collect our bin. If you (line 13)  
 do as I ask, I promise I'll never write to you again. (line 14)

Yours faithfully,  
 Gerard Hiddick

24. Each line of the passage is numbered. A question mark is needed instead of a full stop on one line of the passage. Tick  the number of the line in which the question mark is needed.

- line 6
- line 8
- line 9
- line 13

Do not write in this column	
(1)	
(1)	

25. In one line of the passage a comma has been used incorrectly. A full stop rather than a comma should have been used. Tick  the number of the line in which this error was made.

- line 3
- line 10
- line 12
- line 14

26. There is an apostrophe missing from one of the words in the passage. Tick  the number of the line containing the word with the missing apostrophe.

- line 2
- line 4
- line 8
- line 12

27. A word has been used incorrectly in the passage. Tick  the number of the line containing the incorrect word.

*HOMOPHONE*

- line 1
- line 6
- line 10
- line 11

28. There is a spelling error in one of the lines of the passage. Tick  the number of the line containing the spelling error.

- line 5
- line 7
- line 9
- line 12

Do not write in this column

(1)

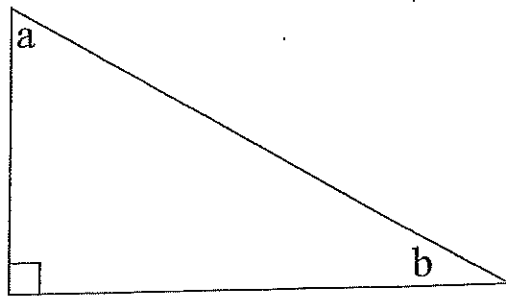
(1)

(1)

(1)

(4)

29. Look at the right-angled triangle below.



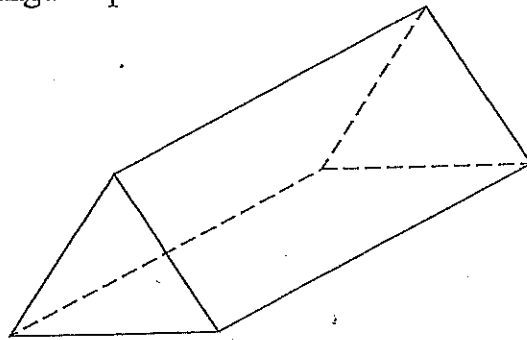
Tick  the statements below that are true:

angle **a** and angle **b** add to make  $180^\circ$

angle **a** and angle **b** are both acute angles

angle **a** and angle **b** add to make  $90^\circ$

30. Look at the triangular prism below.



Euler's Theorem

$$F + V = E + 2$$

$$5 + 6 = 9 + 2$$

Write the correct number in each of the spaces below.

The triangular prism has 5 faces.

The triangular prism has 6 vertices.

31. Look at the numbers below.

Tick  the number in which 3 stands for 3 units.

400.03

403.2

502.3

231.2

Do not write in this column

(1)

(1)

(1)

(3)



## The Gingerbread Man

The gingerbread man gave a gingery shout:  
 "Quick! Open the oven and let me out!"  
 He stood up straight in his baking pan.  
 He jumped to the floor and away he ran.  
 "Catch me," he called, "if you can, can, can."

The gingerbread man met a cock and a pig  
 And a dog that was brown and twice as big  
 As himself. But he called to them all as he ran,  
 "You can't catch a runaway gingerbread man."

The gingerbread man met a reaper and sower.  
 The gingerbread man met a thresher and mower;  
 But no matter how fast they scampered and ran  
 They couldn't catch up with a gingerbread man.

Then he came to a fox and he turned to face him.  
 He dared Old Reynard to follow and chase him;  
 But when he stepped under the fox's nose  
 Something happened. What do you s'pose?  
 The fox gave a snap. The fox gave a yawn,  
 And the gingerbread man was gone, gone, GONE.

**Rowena Bennett**

37. Find the **word** that goes at the end of the eight words below to make a true sentence of nine words.

**The gingerbread man spends much of the poem**

Tick  the **best** answer.

- |         |                                     |
|---------|-------------------------------------|
| singing | <input type="checkbox"/>            |
| cooking | <input type="checkbox"/>            |
| eating  | <input type="checkbox"/>            |
| running | <input checked="" type="checkbox"/> |

Do not write  
in this column

(1)

(1)



38. What is a gingerbread man? Tick  the best answer.

a person

a biscuit

an animal

a reaper

39. These five words are not in alphabetical order:

dotty      discovery      discrete      discontinue      catalogue

Write the words in alphabetical order in the space below. The first word has been done for you.

catalogue discontinue discovery discrete dotty

40. In the final verse the word **s'pose** is used. Write the word without the apostrophe and using all its letters. Write your answer in the space below.

suppose

41. Find the word in the **third** verse of the poem that means **dashed about playfully**.

Write your answer in the space below.

scampered

42. Which line of the **final** verse of the poem tells us that the gingerbread man challenged the fox to pursue him? Write the line in the space below.

He dared Old Reynard to follow and chase him.

(accept 'line 2')

Do not write in this column

(1)

(2)

(1)

(1)

(1)

(6)

43. According to the poem, one of these four statements is true.  
Tick  the true statement.

the dog in verse two was twice as big as the pig

the dog in verse two was twice as big as the cock

the dog was twice as big as the gingerbread man

the dog was twice as big as itself

Do not write  
in this column

44. Look at the four statements below. Tick  each statement true or false.

	True	False
all four sides of a square have the same length	<input checked="" type="checkbox"/>	<input type="checkbox"/>
the three angles of a triangle add up to 360°	<input type="checkbox"/>	<input checked="" type="checkbox"/>
all the angles of an isosceles triangle are the same	<input type="checkbox"/>	<input checked="" type="checkbox"/>
opposite sides of a parallelogram are equal in length	<input checked="" type="checkbox"/>	<input type="checkbox"/>

Do not write in this column

(1)

45. Look at the five fractions below

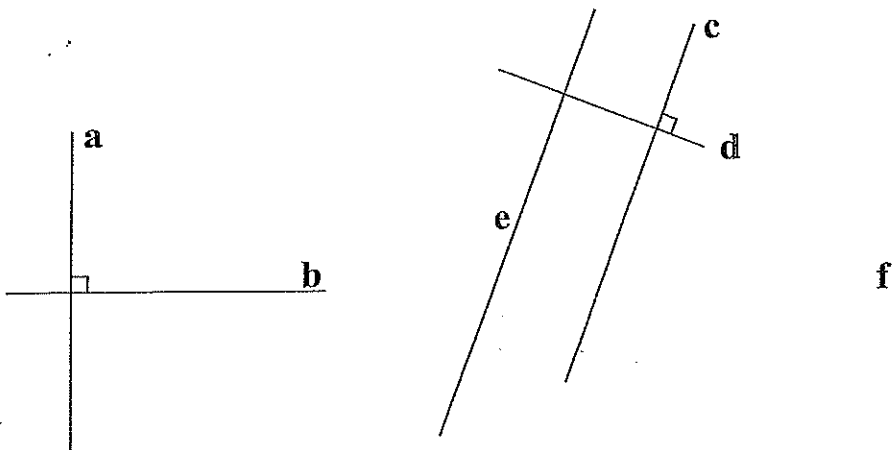
$\frac{5}{12}$	$\frac{1}{36}$	$\frac{2}{18}$	$\frac{4}{9}$	$\frac{5}{6}$
$\frac{15}{36}$	$\frac{1}{36}$	$\frac{4}{36}$	$\frac{16}{36}$	$\frac{30}{36}$

Claire writes these fractions **in order** from smallest to largest. Which fraction will be the **middle fraction** when Claire writes them in order? Write your answer in the space below.

$\frac{5}{12}$

(1)

46. Look at the lines marked **a**, **b**, **c**, **d**, **e** and **f** drawn in the figure below.  
Line **c** is **parallel** to line **e**, and line **a** is **parallel** to line **f**.



Tick  each of the statements below true or false.

	True	False
line <b>a</b> is <b>perpendicular</b> to line <b>b</b>	<input checked="" type="checkbox"/>	<input type="checkbox"/>
line <b>a</b> is <b>parallel</b> to line <b>e</b>	<input type="checkbox"/>	<input checked="" type="checkbox"/>
line <b>d</b> is <b>perpendicular</b> to line <b>e</b>	<input checked="" type="checkbox"/>	<input type="checkbox"/>
line <b>b</b> is <b>perpendicular</b> to line <b>f</b>	<input checked="" type="checkbox"/>	<input type="checkbox"/>

(1)

(3)

47. Michael and Susan agreed to share the cost of a video game. The game cost £27.60. Michael paid 25% of the cost. How much did Susan pay? Write your answer in the space below.

$\frac{3}{4}$  of 27.60

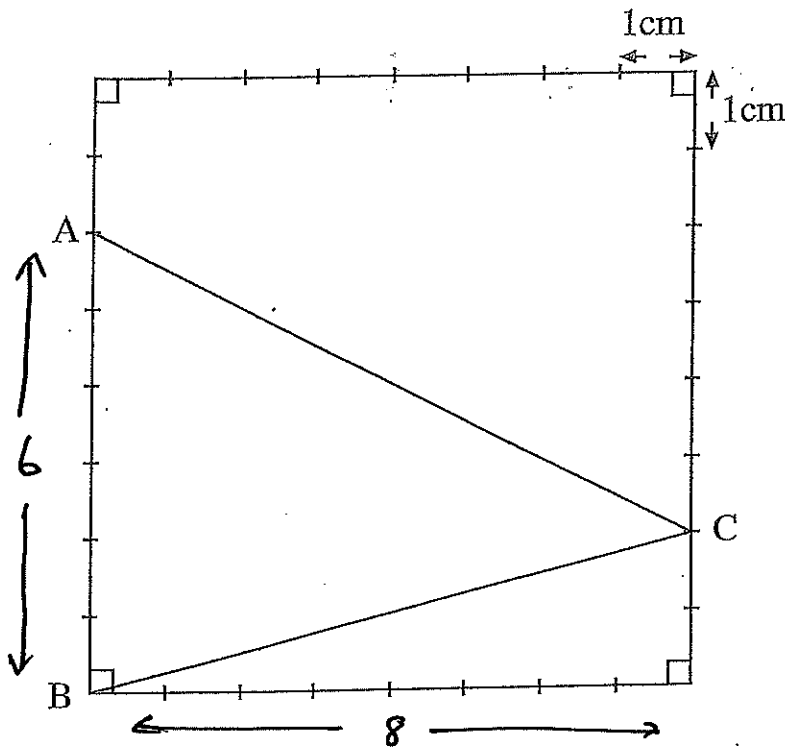
£ 20.70

$$4 \overline{) 27.60} \quad \begin{array}{r} 6.90 \\ \underline{2 \times 3} \\ 20.70 \end{array}$$

Do not write in this column

(1)

48. Look at the square below. Each of its sides is 8 cm long. A triangle ABC is drawn in the square.



What is the area of the triangle ABC? Write your answer in the space below.

24 cm<sup>2</sup>

$$A = \frac{b \times h}{2}$$

$$A = \frac{6 \times 8}{2}$$

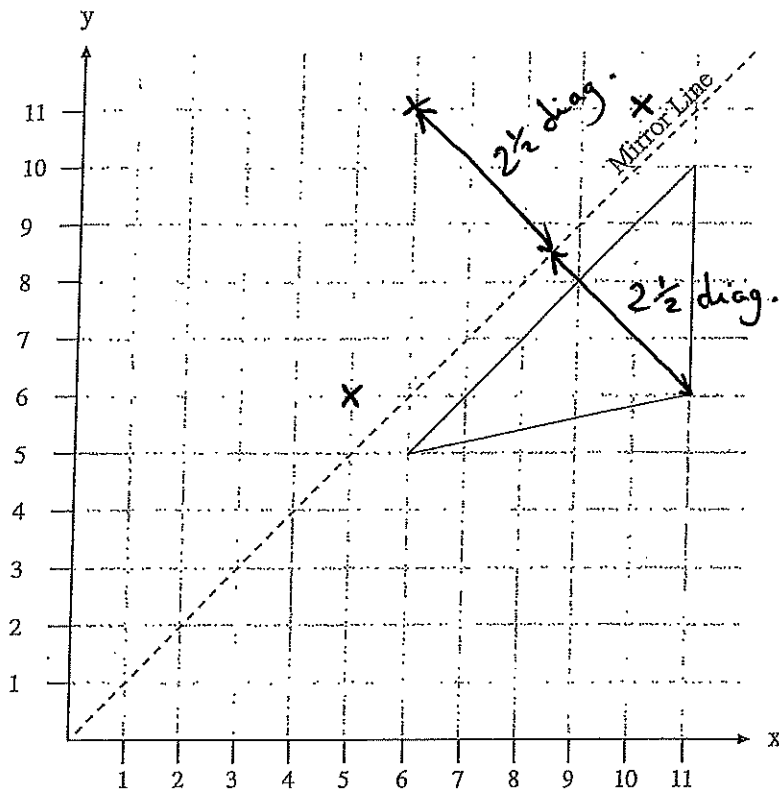
$$A = \frac{48}{2}$$

$$A = 24 \text{ cm}^2$$

(1)

(2)

49. In the figure below there is a triangle and a mirror line.



The triangle is reflected in the mirror line and a **new triangle** is formed. What are the **coordinates** of the **three vertices** of the **new triangle**? Write your answers in any order in the spaces below.

(5, 6)      (6, 11)      (10, 11)

(1)

50. A map has the following scale:  $\times 5.8$   $\left( \begin{array}{l} 1 \text{ cm} = 5 \text{ km} \\ \rightarrow 5.8 \text{ cm} = 29 \text{ km} \end{array} \right.$   $\begin{array}{r} 5.8 \\ \times 5 \\ \hline 29.0 \end{array}$   
 1 centimetre represents 5 kilometres.

Two towns are 5.8 centimetres apart on the map. What is the actual distance between the towns? Write your answer in the space below.

29 km

(1)

51. Two churches are 27.5 kilometres apart. How far apart are the churches on the map? Write your answer in the space below.

$$5 \overline{) 27.5} \\ \underline{05.5} \\ 27.5$$

5.5 cm

(1)

Do not write in this column

Do not write  
in this column

**Windlord**

Ally had always hated sports in school. She used every excuse to miss the class, and she liked to pretend that she didn't need exercise. She was one of those people who seemed to be naturally healthy: her hair always looked shining, her skin was clear and she never seemed to put on any weight, no matter how much or how badly she ate. She always had this idea at the back of her mind that she was fit. She was discovering now that she wasn't.

There was a stitch in her side that stabbed like a red-hot dagger with every breath she took, her throat was raw and her eyes and nose were both running. She was afraid she was going to be sick. She knew the Chopts were close; she didn't know how close because she was afraid to look over her shoulder, but she could hear their panting grunts growing louder, and actually smell their musty, vaguely unpleasant odour. She knew she had to reach the river ... but even if she reached the river would she have the strength left to swim across it?

The rocky ground sloped downwards towards the river, the rough stones and grit gradually giving away to soft, shifting sand. Ally stumbled when she ran onto the beach, the sands seeming to clutch at her feet. She staggered on for a dozen more steps before she actually fell, the tips of her fingers splashing into the river's icy water. Behind her the beasts howled in triumph.

**Michael Scott**

52. Two of Ally's senses tell her that the Chopts are getting closer. Tick  the two senses.

- seeing
- hearing
- smelling
- tasting
- touching

53. What word in the final paragraph tells us that when Ally fell, the Chopts were confident that she wouldn't escape? Write the word in the space below.

triumph

(1)
(1)
(2)

54. According to the passage, only one of the statements below is correct. Tick  the correct statement.

Even if Ally could outrun the Chopts, she might still be in danger because

- she might not have enough energy left to swim across the river
- she might cut the soles of her feet on the rough stones and grit
- she might be unable to survive in the river's icy cold water
- she might be unable to keep her balance in the soft, shifting sand

55. The passage mentions creatures called Chopts. Using only the information in the passage, tick  the statement that best describes the Chopts.

- Chopts are members of the wolf family
- Chopts can't move quickly on sand
- Chopts can't swim
- Chopts are nasty creatures

56. Find the **three or four word phrase** in the final paragraph which is closest in meaning to **being replaced by**. Write the phrase in the space below.

gradually giving away to

57. What **two verbs** tell us that before she fell, Ally wasn't running smoothly on the beach? Write your answers in the spaces below.

stumbled      staggered

58. What **phrase** used in the **first paragraph** of the passage means to be **conscious of** or to **believe**? You may use **between six and eleven words** in your phrase. Write your answer in the space below.

She always had this idea at the back of her mind. (11)

Do not write in this column	
(1)	
(1)	
(1)	
(2)	
(1)	
(6)	