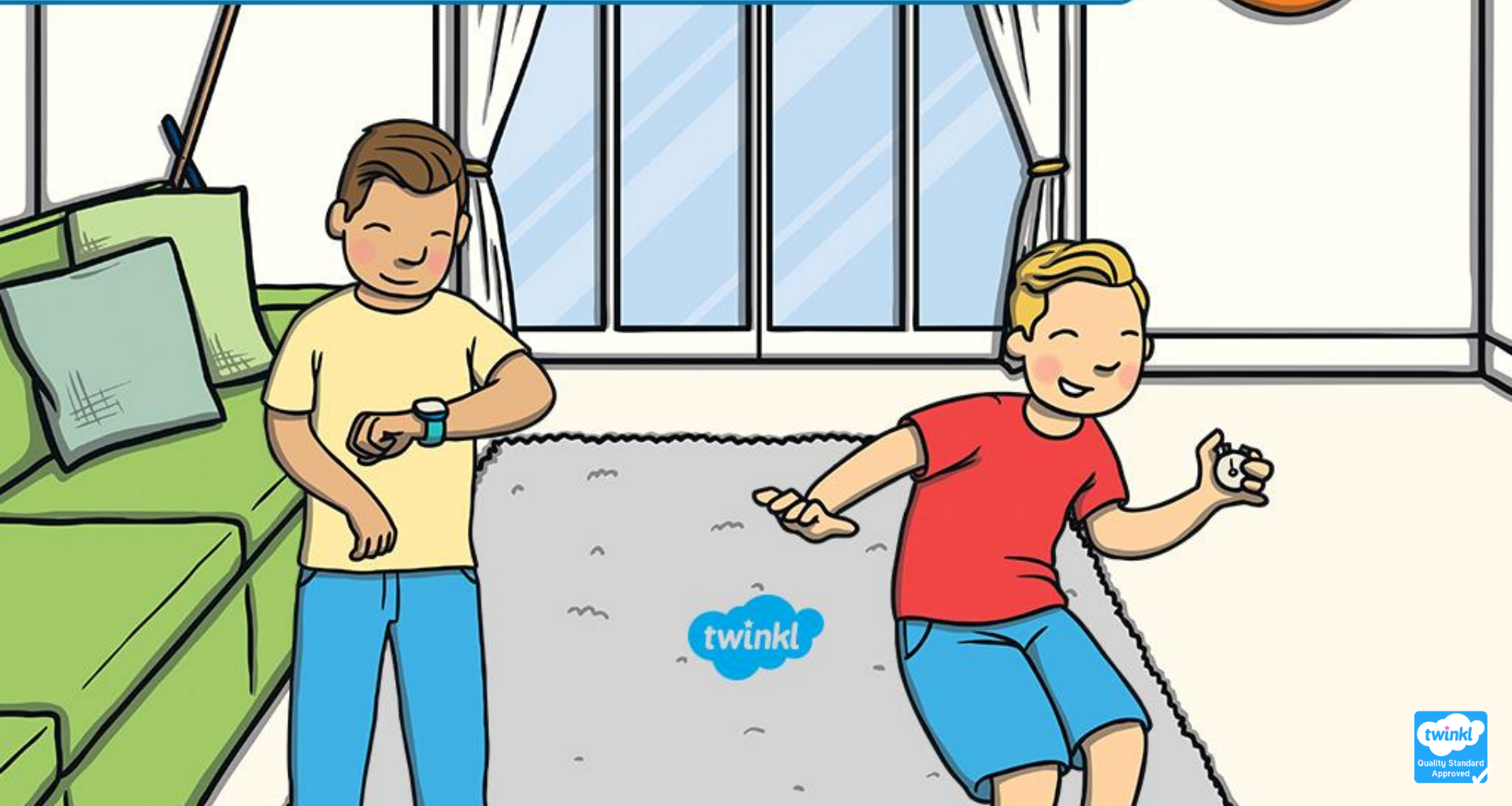


Telling the Time



twinkl

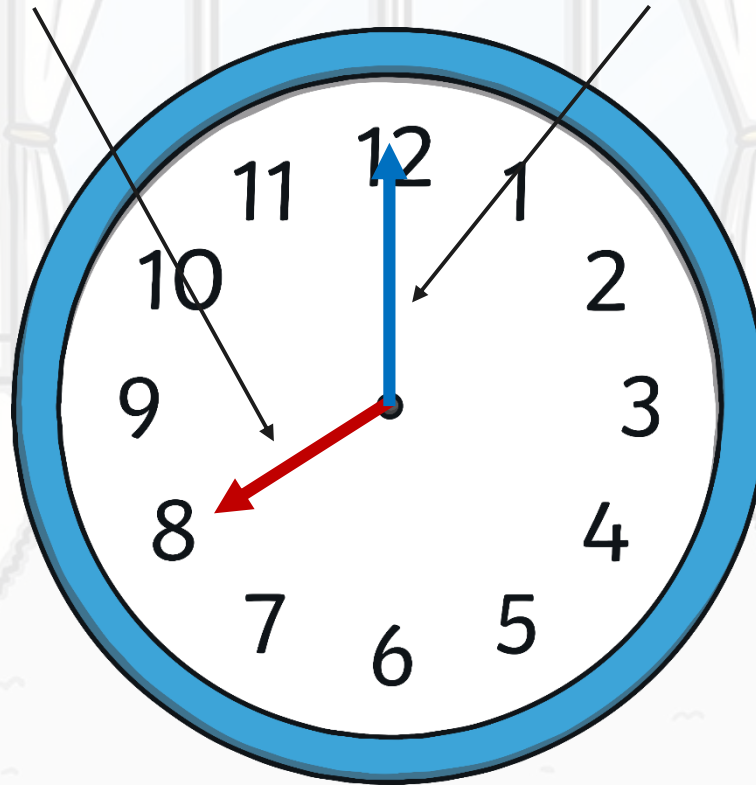
Hours and Minutes

This is the **hour** hand.

It is the shortest hand on the clock.

This is the **minute** hand.

It is longer than the hour hand.



Hours and Minutes

When the minute hand is pointing to 12, it is showing a full hour. We call this time 'o'clock'.

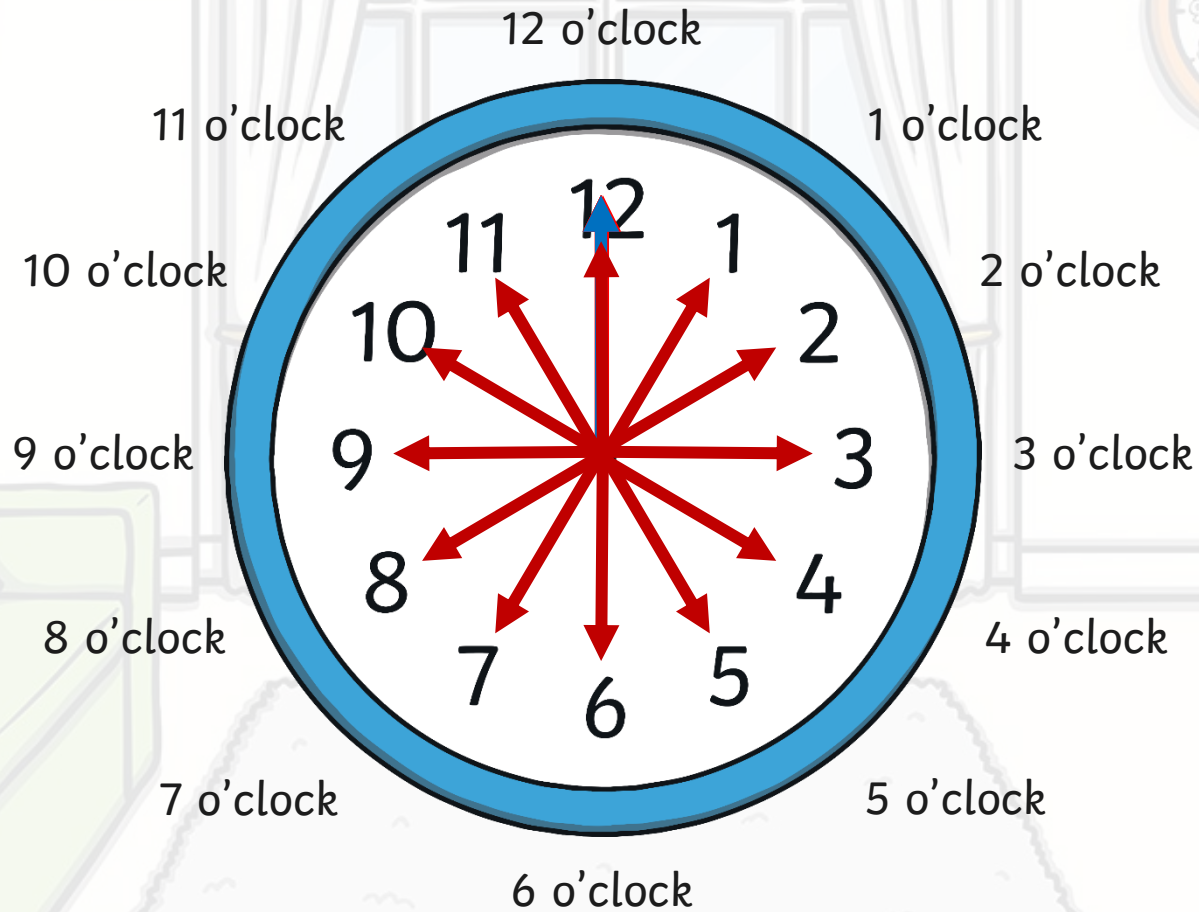


On this clock, the hour hand is pointing at the 8 and the minute hand is pointing to the 12.

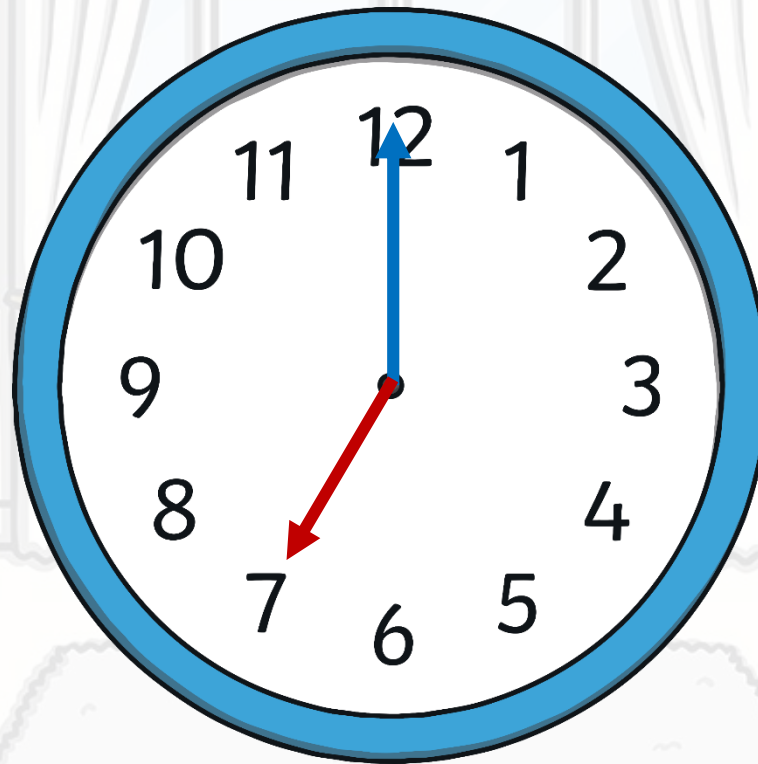
This clock is showing that the time is **8 o'clock**.



What Time Is It?



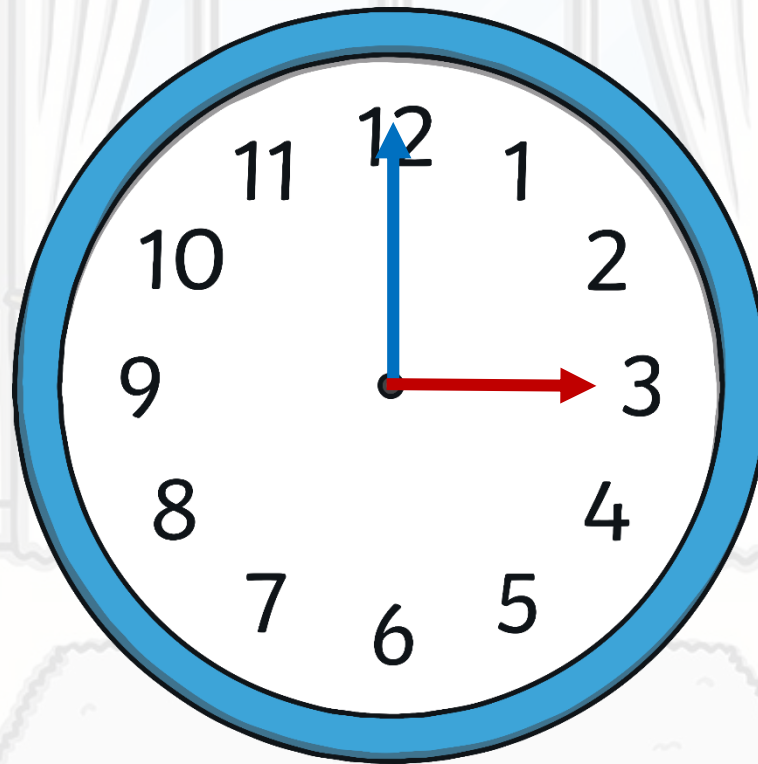
What Time Is It?



It is 7 o'clock.



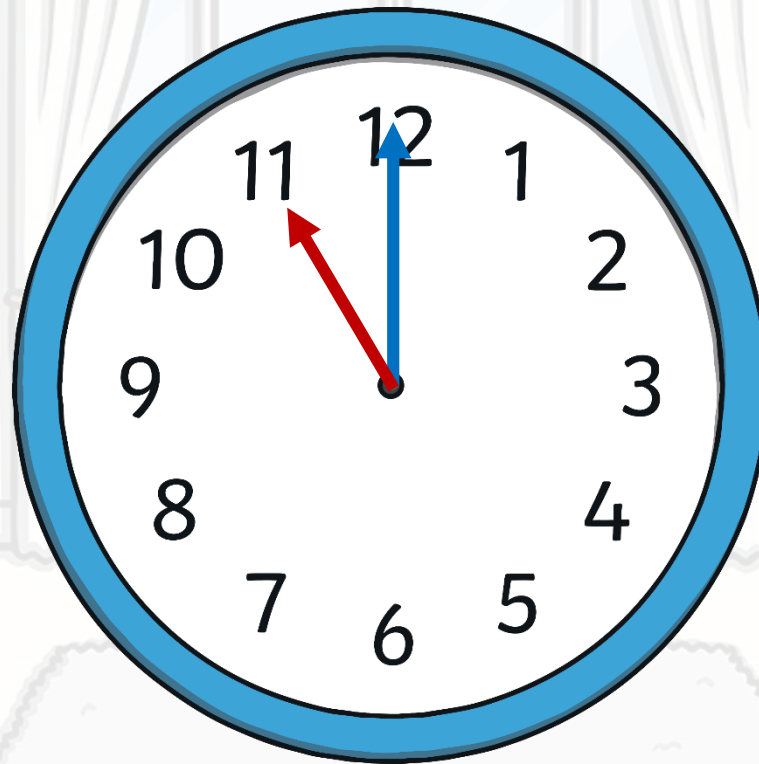
What Time Is It?



It is 3 o'clock.



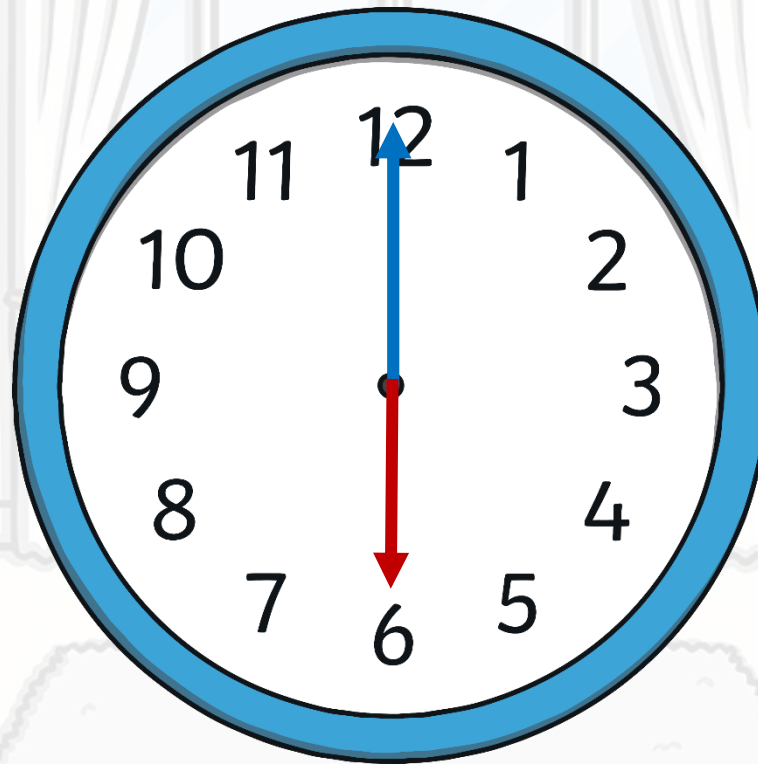
What Time Is It?



It is 11 o'clock.



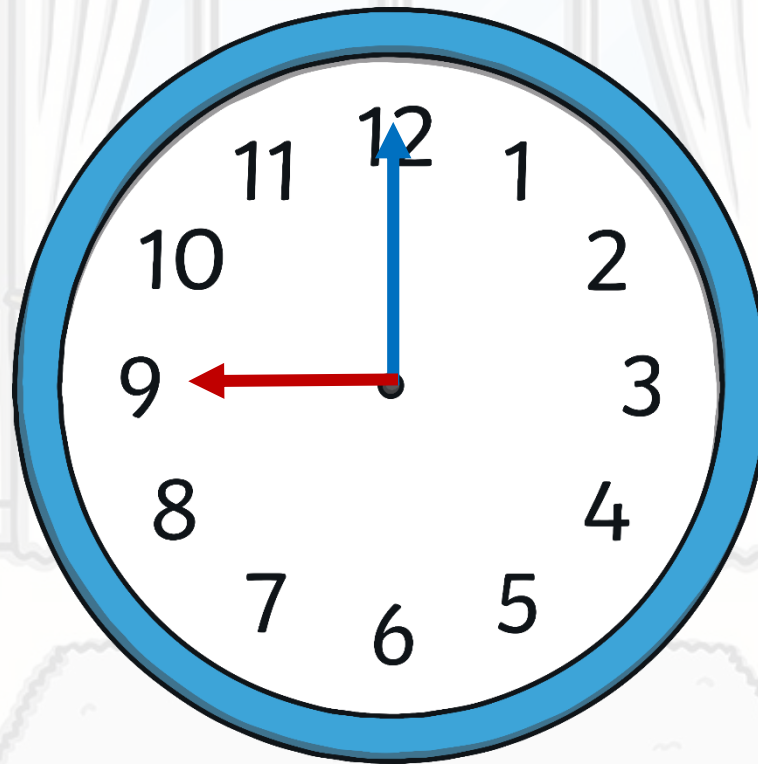
What Time Is It?



It is 6 o'clock.



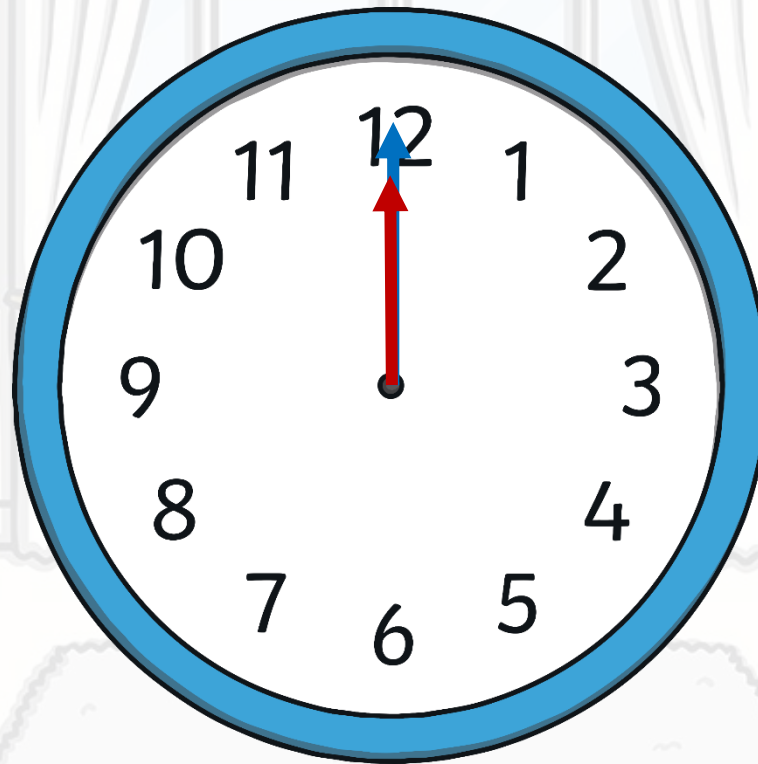
What Time Is It?



It is 9 o'clock.



What Time Is It?

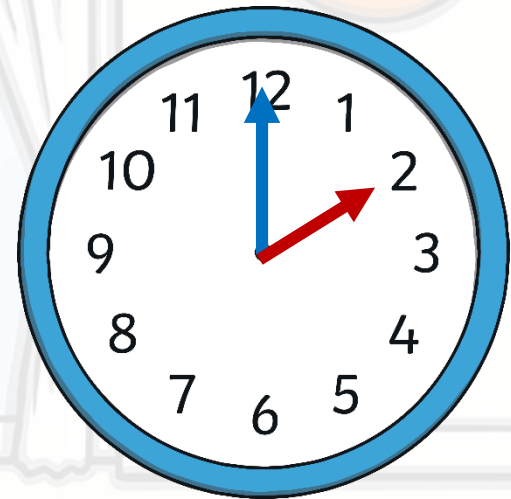
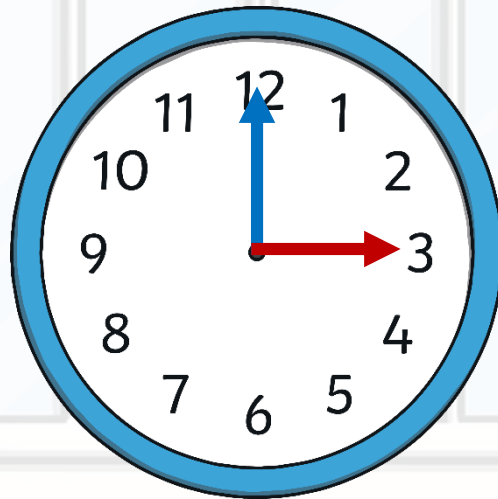
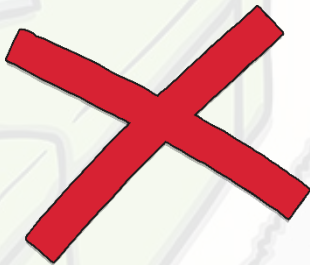


It is 12 o'clock.



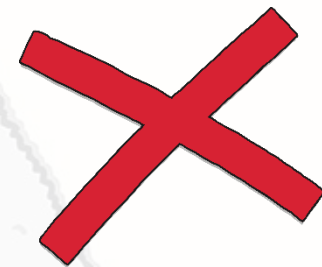
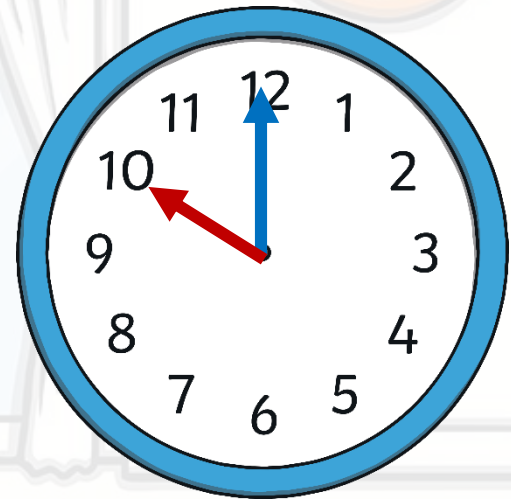
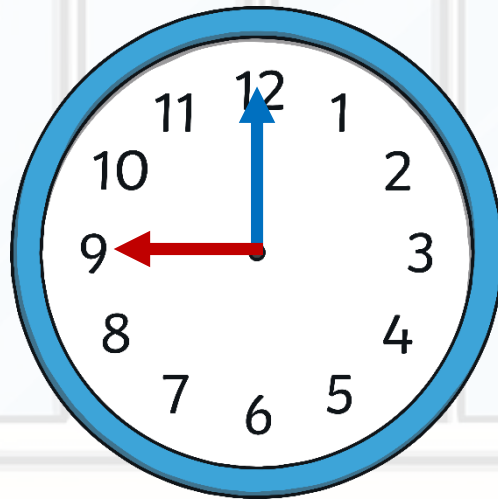
What Time Is It?

Which clock shows 2 o'clock?



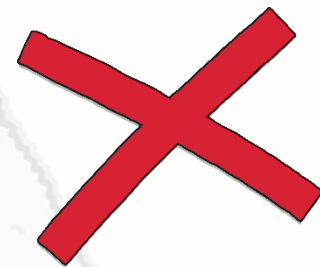
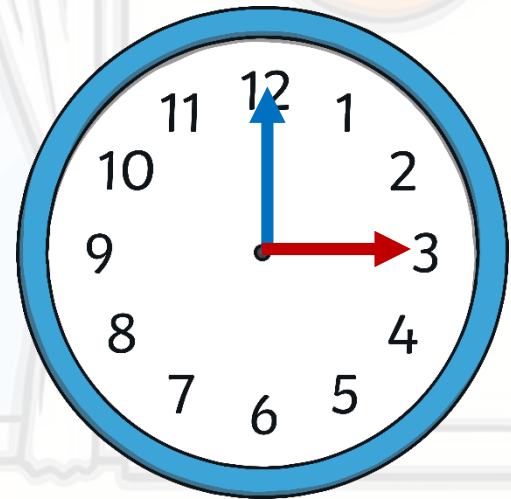
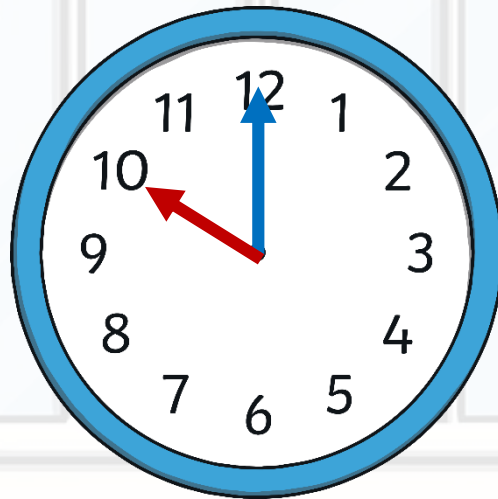
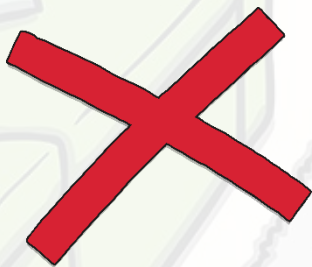
What Time Is It?

Which clock shows 4 o'clock?



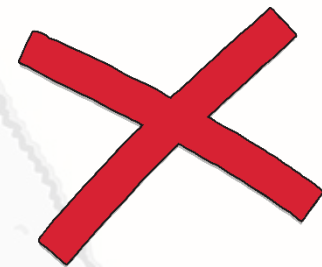
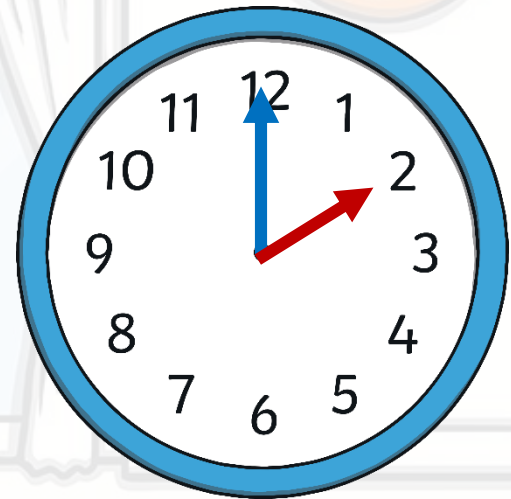
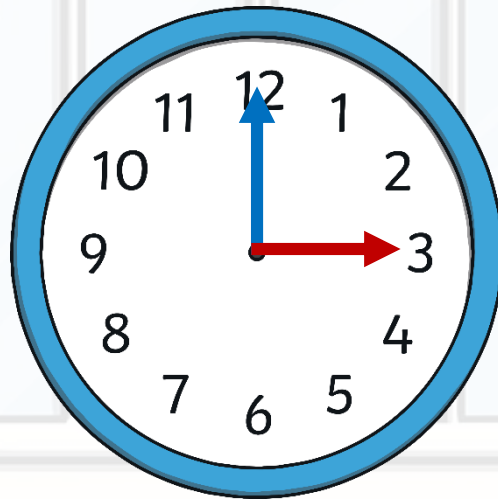
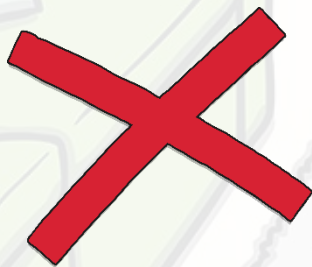
What Time Is It?

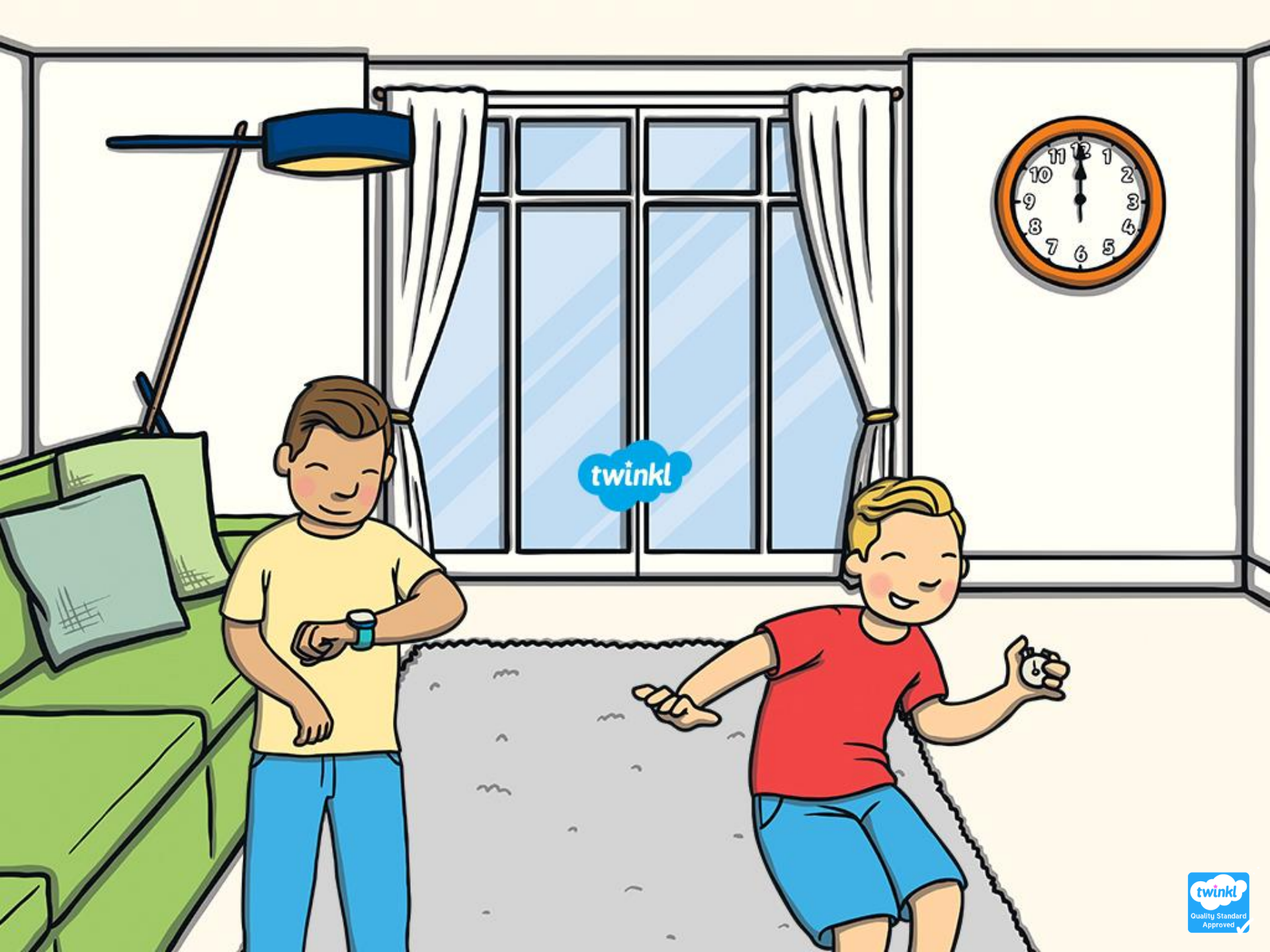
Which clock shows 10 o'clock?



What Time Is It?

Which clock shows 3 o'clock?





twinkl