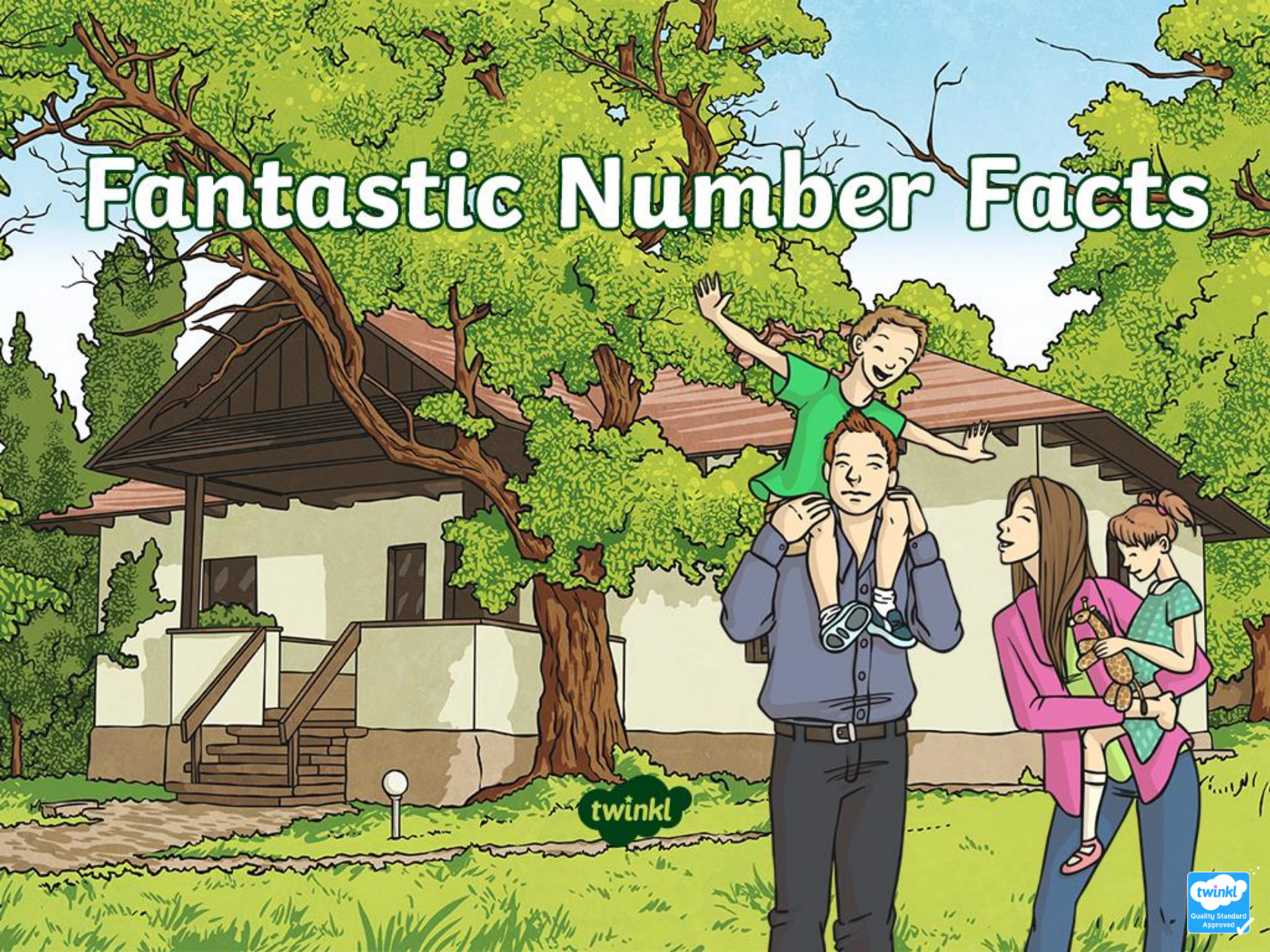


Fantastic Number Facts



twinkl

Fact Families

A fact family is a group of number facts that belong to a 'family'. The family shares the same numbers.

$$2 + 3 = 5$$

$$3 + 2 = 5$$

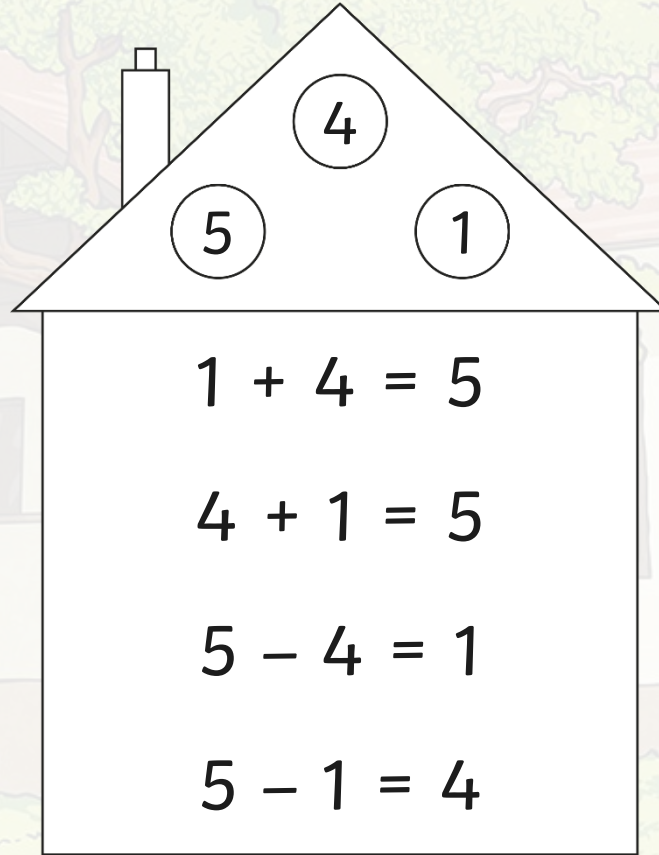
$$5 - 2 = 3$$

$$5 - 3 = 2$$



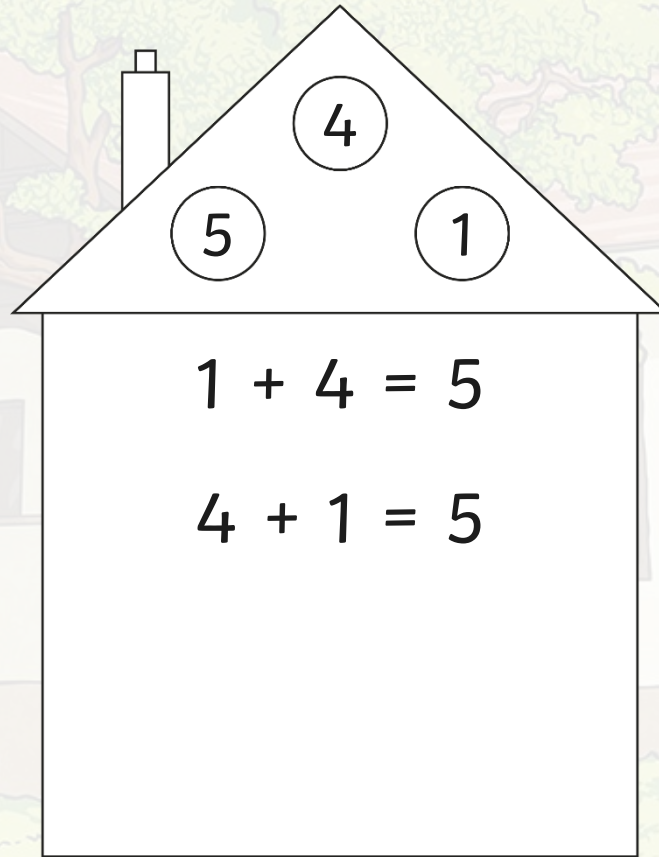
Fact Families

Fact families include addition and subtraction number facts.
A fact family has 2 addition calculations and 2 subtraction calculations.



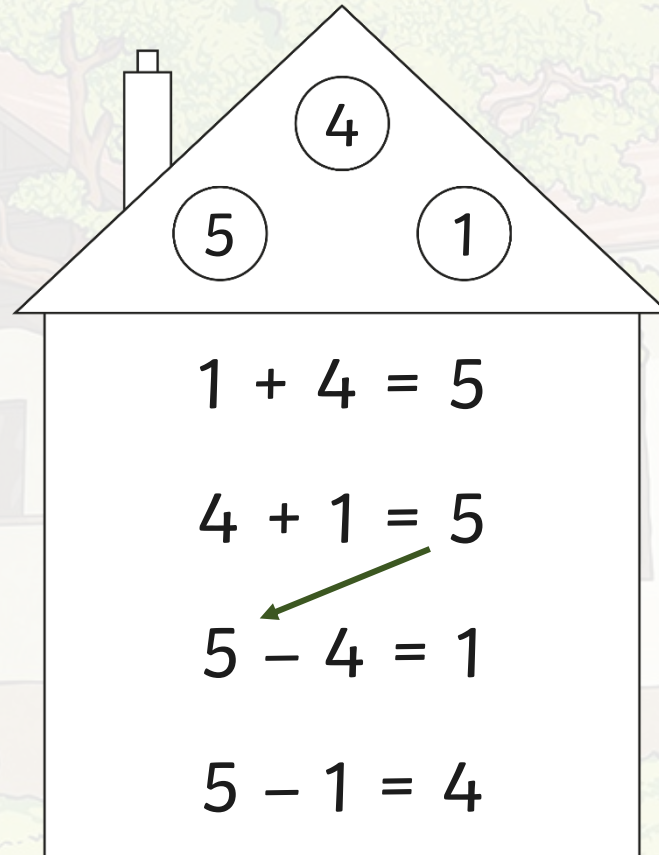
Fact Families

When we make a 'fact family', we can start with the addition number bonds that we already know:



Fact Families

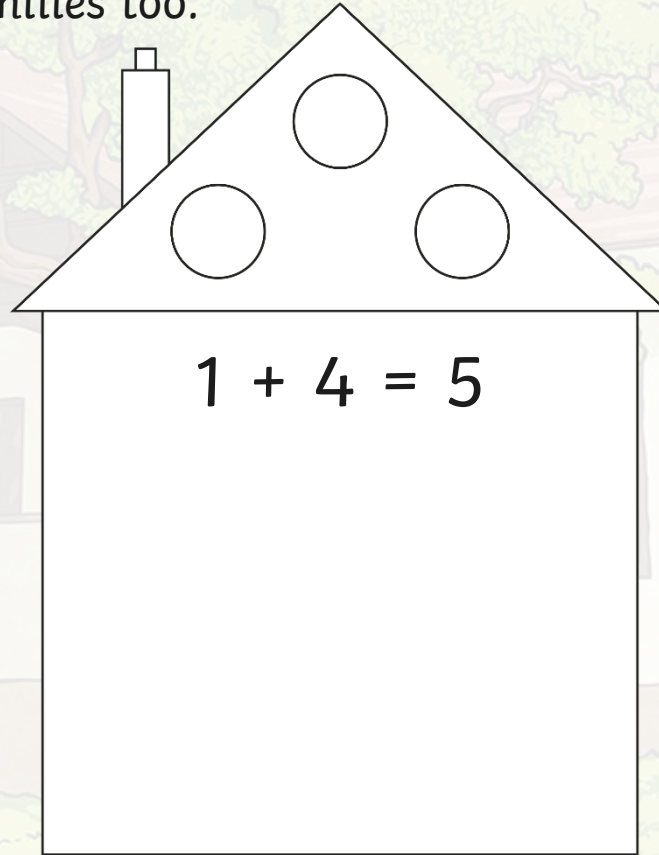
Then, we need to use the 'inverse' to turn the calculation around. We use the **answer** as a starting point to make a subtraction calculation, like this:

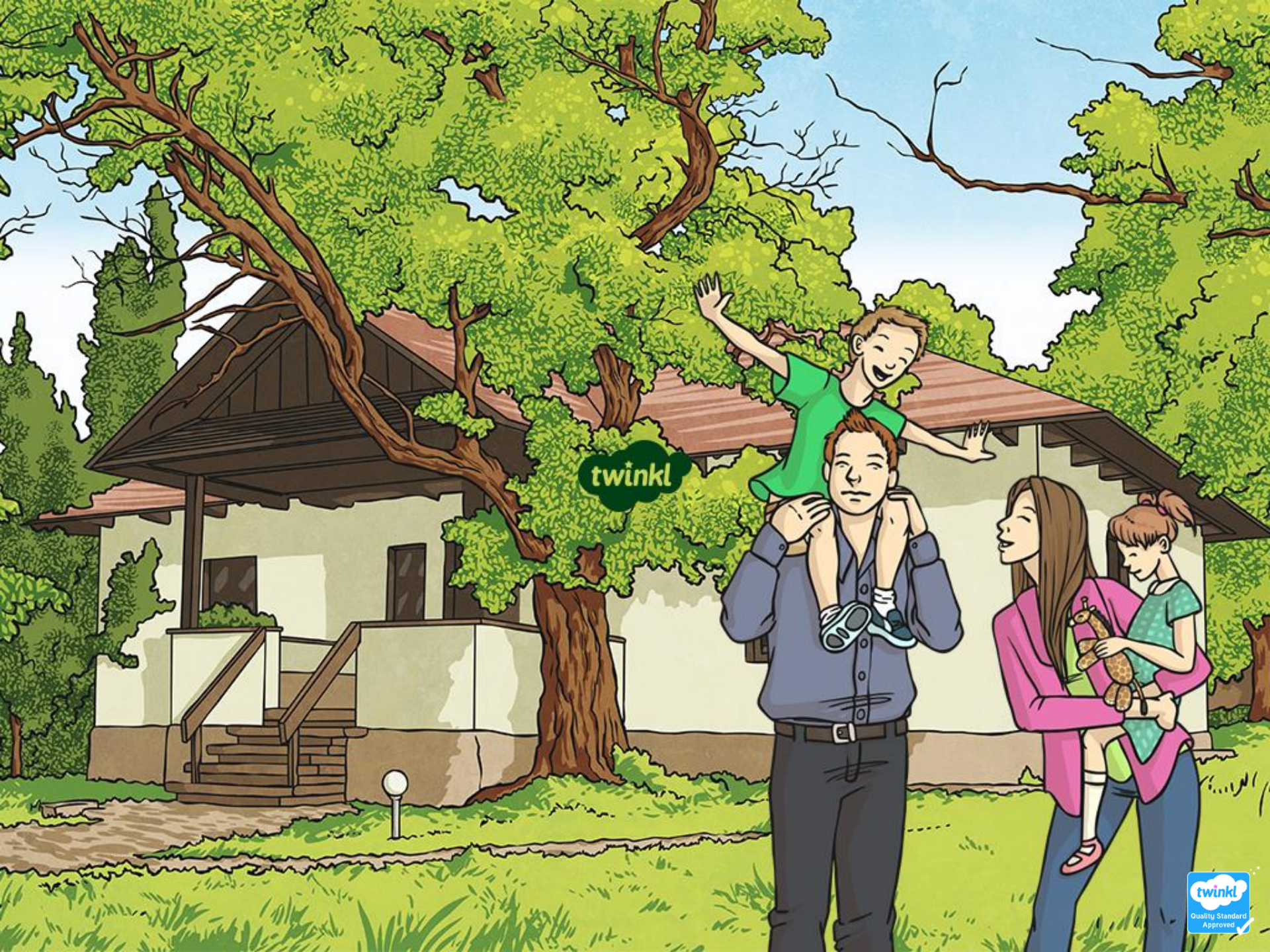


Fact Families

Think about the number bonds to 5.

How many different fact families can you make? Don't forget to include 0 and 5 in your fact families too.





twinkl